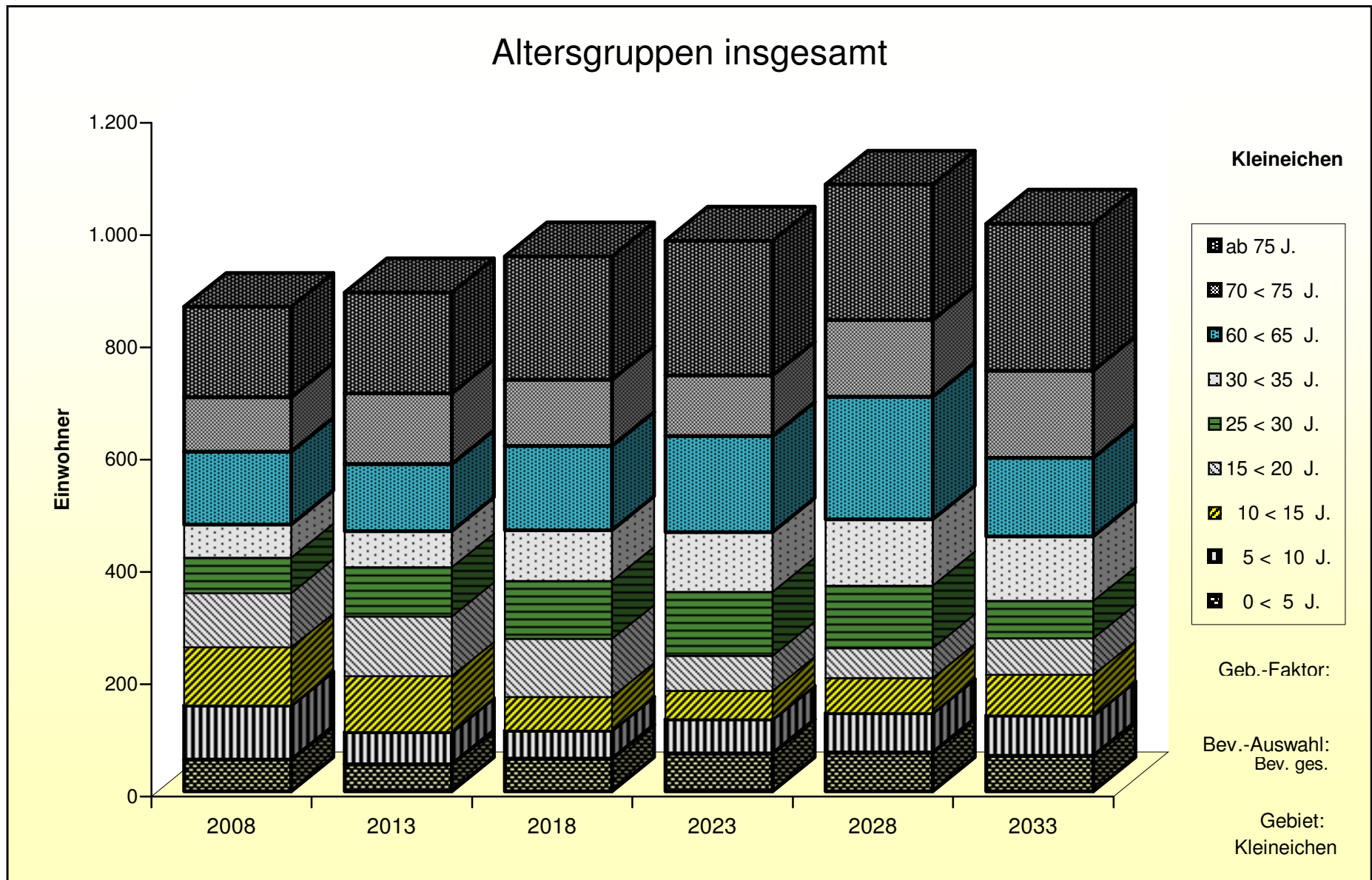
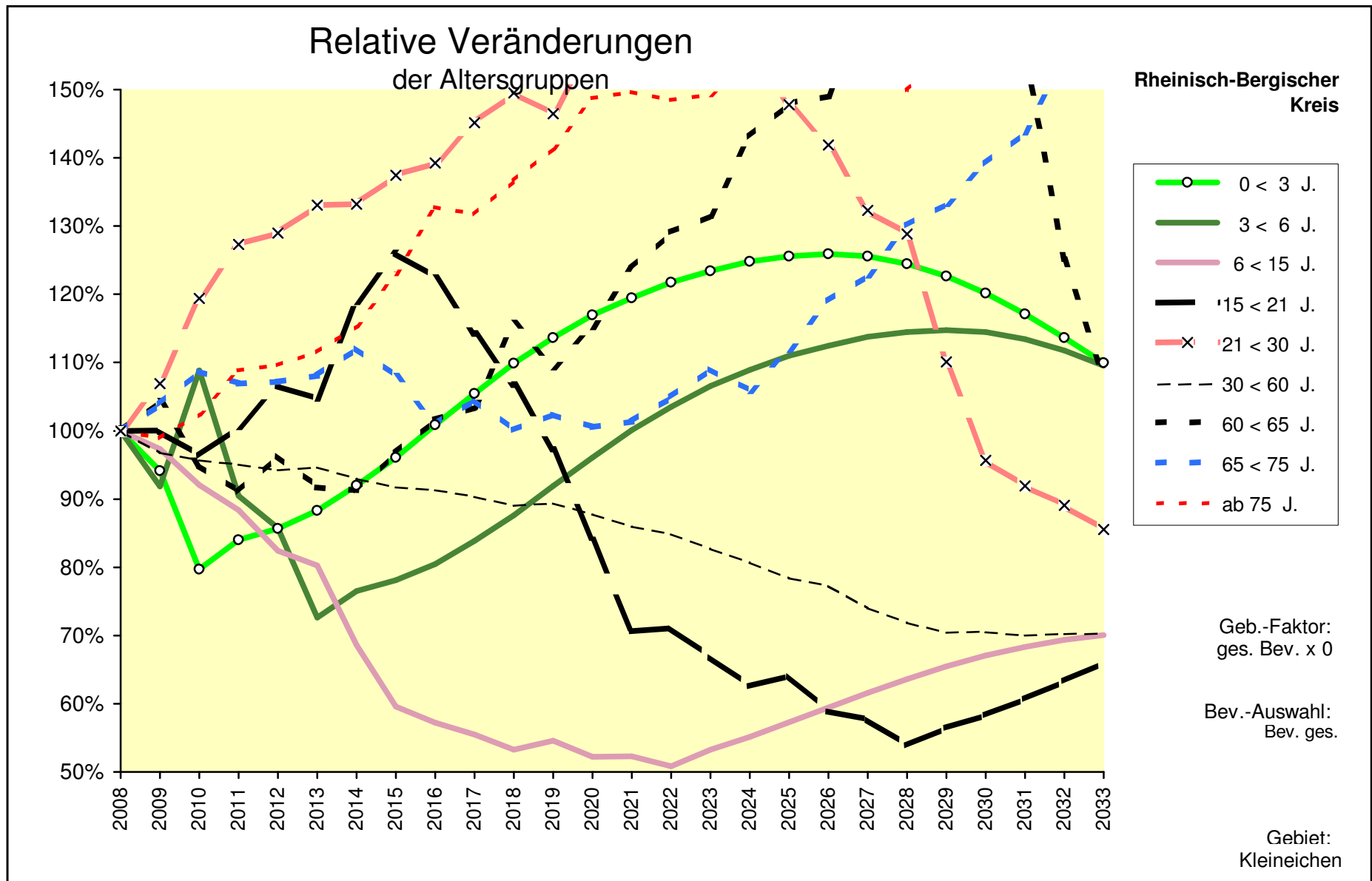


| Alle Altersgruppen | Bev. ges. | | | | | | Kleineichen | | | | | | |
|--------------------|-----------|-------|-------|-------|-------|-------|-------------|------|--------|--------|--------|--------|--------|
| | 2008 | 2013 | 2018 | 2023 | 2028 | 2033 | 2008 | 2013 | 2018 | 2023 | 2028 | 2033 | |
| 0 < 5 J. | 56 | 48 | 58 | 67 | 69 | 63 | 0 < 5 J. | 100% | 85,3% | 104,1% | 120,1% | 123,7% | 112,3% |
| 5 < 10 J. | 97 | 58 | 50 | 60 | 70 | 72 | 5 < 10 J. | 100% | 59,4% | 51,1% | 62,3% | 71,9% | 74,0% |
| 10 < 15 J. | 103 | 100 | 60 | 51 | 63 | 72 | 10 < 15 J. | 100% | 97,0% | 58,1% | 49,9% | 60,9% | 70,3% |
| 15 < 20 J. | 97 | 106 | 104 | 62 | 53 | 65 | 15 < 20 J. | 100% | 109,3% | 106,8% | 64,0% | 55,0% | 67,1% |
| 20 < 25 J. | 85 | 100 | 110 | 107 | 64 | 55 | 20 < 25 J. | 100% | 117,3% | 129,3% | 126,2% | 75,6% | 65,0% |
| 25 < 30 J. | 63 | 87 | 103 | 114 | 111 | 67 | 25 < 30 J. | 100% | 138,7% | 164,0% | 180,6% | 176,3% | 105,7% |
| 30 < 35 J. | 59 | 65 | 90 | 107 | 118 | 115 | 30 < 35 J. | 100% | 109,7% | 153,3% | 181,2% | 199,7% | 194,9% |
| 35 < 40 J. | 131 | 61 | 67 | 94 | 111 | 122 | 35 < 40 J. | 100% | 46,2% | 51,1% | 71,4% | 84,4% | 93,0% |
| 40 < 45 J. | 209 | 134 | 62 | 69 | 97 | 114 | 40 < 45 J. | 100% | 64,2% | 29,9% | 33,1% | 46,2% | 54,6% |
| 45 < 50 J. | 168 | 213 | 138 | 64 | 71 | 99 | 45 < 50 J. | 100% | 126,8% | 81,9% | 38,2% | 42,3% | 59,0% |
| 50 < 55 J. | 151 | 170 | 217 | 140 | 66 | 72 | 50 < 55 J. | 100% | 112,6% | 143,9% | 92,8% | 43,4% | 48,0% |
| 55 < 60 J. | 121 | 151 | 172 | 220 | 141 | 66 | 55 < 60 J. | 100% | 125,1% | 142,0% | 181,6% | 116,8% | 54,7% |
| 60 < 65 J. | 130 | 119 | 151 | 171 | 219 | 140 | 60 < 65 J. | 100% | 91,7% | 115,8% | 131,5% | 168,2% | 107,9% |
| 65 < 70 J. | 136 | 126 | 116 | 146 | 166 | 213 | 65 < 70 J. | 100% | 92,4% | 85,2% | 107,7% | 122,4% | 156,8% |
| 70 < 75 J. | 97 | 126 | 117 | 108 | 137 | 156 | 70 < 75 J. | 100% | 130,1% | 121,0% | 111,0% | 140,9% | 160,4% |
| ab 75 J. | 161 | 180 | 220 | 240 | 241 | 262 | ab 75 J. | 100% | 111,5% | 136,7% | 149,3% | 150,0% | 162,6% |
| insges. | 1.864 | 1.843 | 1.835 | 1.821 | 1.796 | 1.754 | insges. | 100% | 98,9% | 98,4% | 97,7% | 96,4% | 94,1% |
| | 796 | 872 | 993 | 1.025 | 970 | 909 | 50 + | 100% | 109,6% | 124,8% | 128,8% | 121,9% | 114,2% |

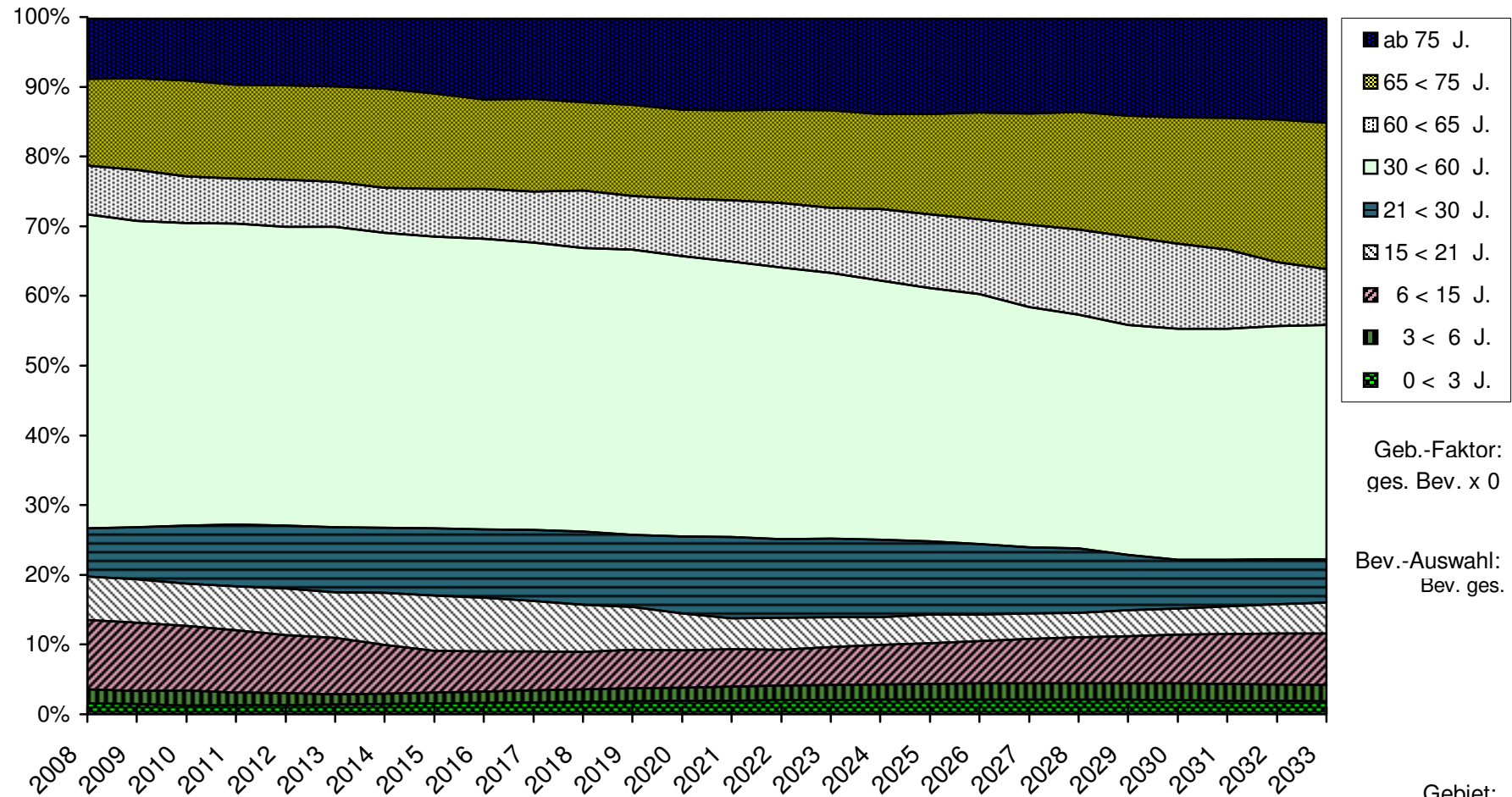


| | 2008 | 2009 | 2010 | 2011 | 2012 | 2013 | 2014 | 2015 | 2016 | 2017 | 2018 | 2019 | 2020 | |
|--------------|--------------|--------------|--------------|--------------|--------------|--------------|--------------|--------------|--------------|--------------|--------------|--------------|--------------|------------|
| 0 < 3 J. | 33 | 31 | 26 | 28 | 28 | 29 | 30 | 32 | 33 | 35 | 36 | 37 | 39 | 0 < 3 J. |
| 3 < 6 J. | 37 | 34 | 40 | 33 | 32 | 27 | 28 | 29 | 30 | 31 | 32 | 34 | 36 | 3 < 6 J. |
| 6 < 15 J. | 186 | 181 | 171 | 164 | 153 | 149 | 128 | 111 | 106 | 103 | 99 | 102 | 97 | 6 < 15 J. |
| 15 < 21 J. | 116 | 116 | 112 | 117 | 124 | 121 | 138 | 146 | 142 | 133 | 124 | 113 | 98 | 15 < 21 J. |
| 21 < 30 J. | 129 | 138 | 154 | 164 | 166 | 172 | 172 | 177 | 180 | 187 | 193 | 189 | 202 | 21 < 30 J. |
| 30 < 60 J. | 839 | 812 | 803 | 797 | 790 | 794 | 780 | 770 | 766 | 758 | 747 | 750 | 737 | 30 < 60 J. |
| 60 < 65 J. | 130 | 136 | 123 | 118 | 125 | 119 | 119 | 126 | 132 | 134 | 151 | 142 | 150 | 60 < 65 J. |
| 65 < 75 J. | 233 | 242 | 253 | 249 | 250 | 252 | 261 | 252 | 235 | 244 | 233 | 239 | 234 | 65 < 75 J. |
| ab 75 J. | 161 | 159 | 165 | 175 | 177 | 180 | 186 | 198 | 214 | 212 | 220 | 228 | 240 | ab 75 J. |
| Summe | 1.864 | 1.849 | 1.848 | 1.846 | 1.845 | 1.843 | 1.841 | 1.840 | 1.838 | 1.837 | 1.835 | 1.833 | 1.831 | |
| | 2021 | 2022 | 2023 | 2024 | 2025 | 2026 | 2027 | 2028 | 2029 | 2030 | 2031 | 2032 | 2033 | |
| 0 < 3 J. | 39 | 40 | 41 | 41 | 41 | 42 | 41 | 41 | 40 | 40 | 39 | 38 | 36 | 0 < 3 J. |
| 3 < 6 J. | 37 | 38 | 39 | 40 | 41 | 42 | 42 | 42 | 42 | 42 | 42 | 41 | 41 | 3 < 6 J. |
| 6 < 15 J. | 97 | 95 | 99 | 103 | 107 | 111 | 115 | 118 | 122 | 125 | 127 | 129 | 130 | 6 < 15 J. |
| 15 < 21 J. | 82 | 82 | 78 | 73 | 74 | 68 | 67 | 63 | 65 | 68 | 70 | 73 | 77 | 15 < 21 J. |
| 21 < 30 J. | 214 | 206 | 206 | 202 | 191 | 183 | 171 | 166 | 142 | 123 | 119 | 115 | 110 | 21 < 30 J. |
| 30 < 60 J. | 721 | 712 | 694 | 677 | 658 | 648 | 621 | 603 | 591 | 592 | 587 | 589 | 589 | 30 < 60 J. |
| 60 < 65 J. | 161 | 168 | 171 | 186 | 192 | 194 | 214 | 219 | 227 | 216 | 202 | 163 | 140 | 60 < 65 J. |
| 65 < 75 J. | 236 | 244 | 254 | 247 | 261 | 277 | 286 | 303 | 311 | 324 | 335 | 361 | 369 | 65 < 75 J. |
| ab 75 J. | 241 | 239 | 240 | 250 | 248 | 244 | 247 | 241 | 249 | 252 | 253 | 255 | 262 | ab 75 J. |
| Summe | 1.828 | 1.825 | 1.821 | 1.818 | 1.813 | 1.808 | 1.803 | 1.796 | 1.790 | 1.782 | 1.773 | 1.764 | 1.754 | |



Anteile der Altersgruppen an der Gesamtbevölkerung

Rheinisch-Bergischer
Kreis



Geb.-Faktor:
ges. Bev. x 0

Bev.-Auswahl:
Bev. ges.

Gebiet:
Kleineichen

Überblick 3
Alle Altersgruppen

| |
|-------------------------|
| Basis-Jahr: 2008 |
|-------------------------|

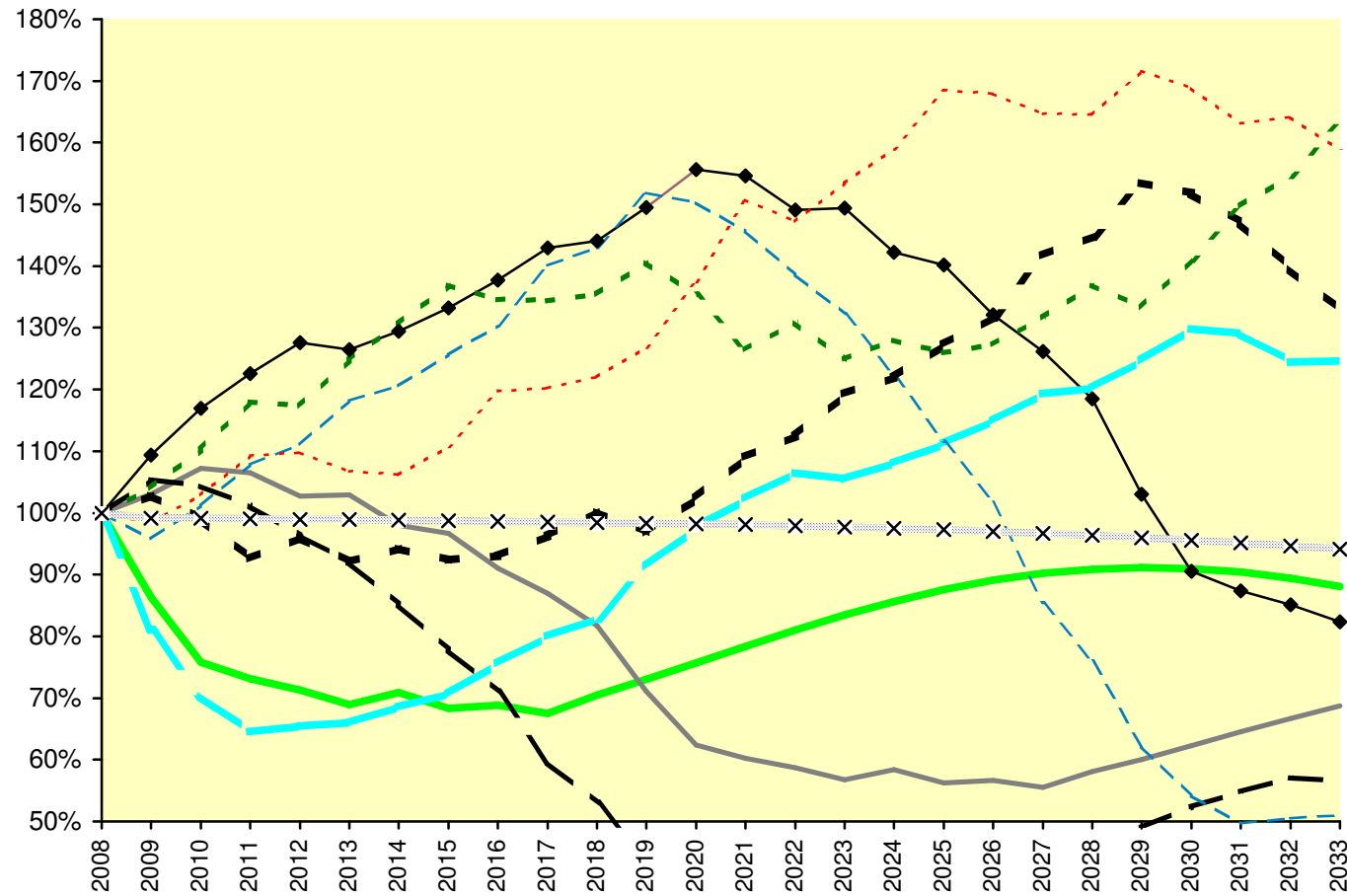
Bev. ges.

Kleineichen

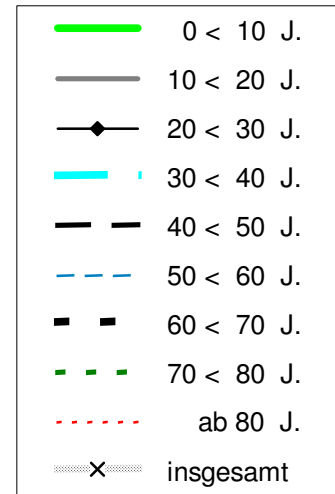
Rheinisch-Bergischer Kreis

| | 2008 | 2009 | 2010 | 2011 | 2012 | 2013 | 2014 | 2015 | 2016 | 2017 | 2018 | 2019 | 2020 | |
|------------------|--------------|--------------|--------------|--------------|--------------|--------------|--------------|--------------|--------------|--------------|--------------|--------------|--------------|------------------|
| 0 < 10 J. | 153 | 132 | 116 | 112 | 109 | 105 | 108 | 105 | 105 | 103 | 108 | 112 | 116 | 0 < 10 J. |
| 10 < 20 J. | 200 | 206 | 215 | 213 | 205 | 206 | 196 | 193 | 182 | 174 | 163 | 142 | 125 | 10 < 20 J. |
| 20 < 30 J. | 148 | 162 | 173 | 181 | 189 | 187 | 192 | 197 | 204 | 212 | 213 | 221 | 230 | 20 < 30 J. |
| 30 < 40 J. | 190 | 154 | 134 | 123 | 124 | 125 | 130 | 134 | 144 | 152 | 157 | 174 | 186 | 30 < 40 J. |
| 40 < 50 J. | 377 | 397 | 393 | 382 | 363 | 347 | 321 | 293 | 268 | 225 | 200 | 163 | 142 | 40 < 50 J. |
| 50 < 60 J. | 272 | 261 | 275 | 293 | 302 | 321 | 328 | 342 | 354 | 381 | 389 | 413 | 409 | 50 < 60 J. |
| 60 < 70 J. | 266 | 274 | 264 | 246 | 255 | 245 | 251 | 246 | 247 | 256 | 266 | 258 | 272 | 60 < 70 J. |
| 70 < 80 J. | 168 | 175 | 185 | 198 | 197 | 210 | 220 | 230 | 226 | 226 | 228 | 236 | 227 | 70 < 80 J. |
| ab 80 J. | 90 | 89 | 93 | 98 | 99 | 96 | 96 | 100 | 108 | 108 | 110 | 114 | 124 | ab 80 J. |
| insgesamt | 1.864 | 1.849 | 1.848 | 1.846 | 1.845 | 1.843 | 1.841 | 1.840 | 1.838 | 1.837 | 1.835 | 1.833 | 1.831 | insgesamt |
| | 2021 | 2022 | 2023 | 2024 | 2025 | 2026 | 2027 | 2028 | 2029 | 2030 | 2031 | 2032 | 2033 | |
| 0 < 10 J. | 120 | 124 | 128 | 131 | 134 | 136 | 138 | 139 | 139 | 139 | 138 | 137 | 135 | 0 < 10 J. |
| 10 < 20 J. | 120 | 117 | 113 | 117 | 112 | 113 | 111 | 116 | 120 | 125 | 129 | 133 | 137 | 10 < 20 J. |
| 20 < 30 J. | 229 | 221 | 221 | 210 | 207 | 195 | 187 | 175 | 153 | 134 | 129 | 126 | 122 | 20 < 30 J. |
| 30 < 40 J. | 194 | 202 | 200 | 205 | 211 | 218 | 227 | 228 | 237 | 247 | 245 | 236 | 237 | 30 < 40 J. |
| 40 < 50 J. | 130 | 132 | 133 | 139 | 143 | 153 | 162 | 168 | 185 | 197 | 207 | 215 | 213 | 40 < 50 J. |
| 50 < 60 J. | 396 | 377 | 360 | 333 | 304 | 277 | 232 | 207 | 169 | 147 | 135 | 137 | 139 | 50 < 60 J. |
| 60 < 70 J. | 290 | 299 | 317 | 325 | 338 | 350 | 377 | 385 | 408 | 404 | 391 | 371 | 353 | 60 < 70 J. |
| 70 < 80 J. | 213 | 220 | 210 | 215 | 212 | 214 | 221 | 230 | 224 | 237 | 252 | 260 | 274 | 70 < 80 J. |
| ab 80 J. | 136 | 133 | 138 | 143 | 152 | 151 | 148 | 148 | 154 | 152 | 147 | 148 | 143 | ab 80 J. |
| insgesamt | 1.828 | 1.825 | 1.821 | 1.818 | 1.813 | 1.808 | 1.803 | 1.796 | 1.790 | 1.782 | 1.773 | 1.764 | 1.754 | insgesamt |

Relative Veränderungen in 10er-Altersgruppen



Rheinisch-Bergischer Kreis



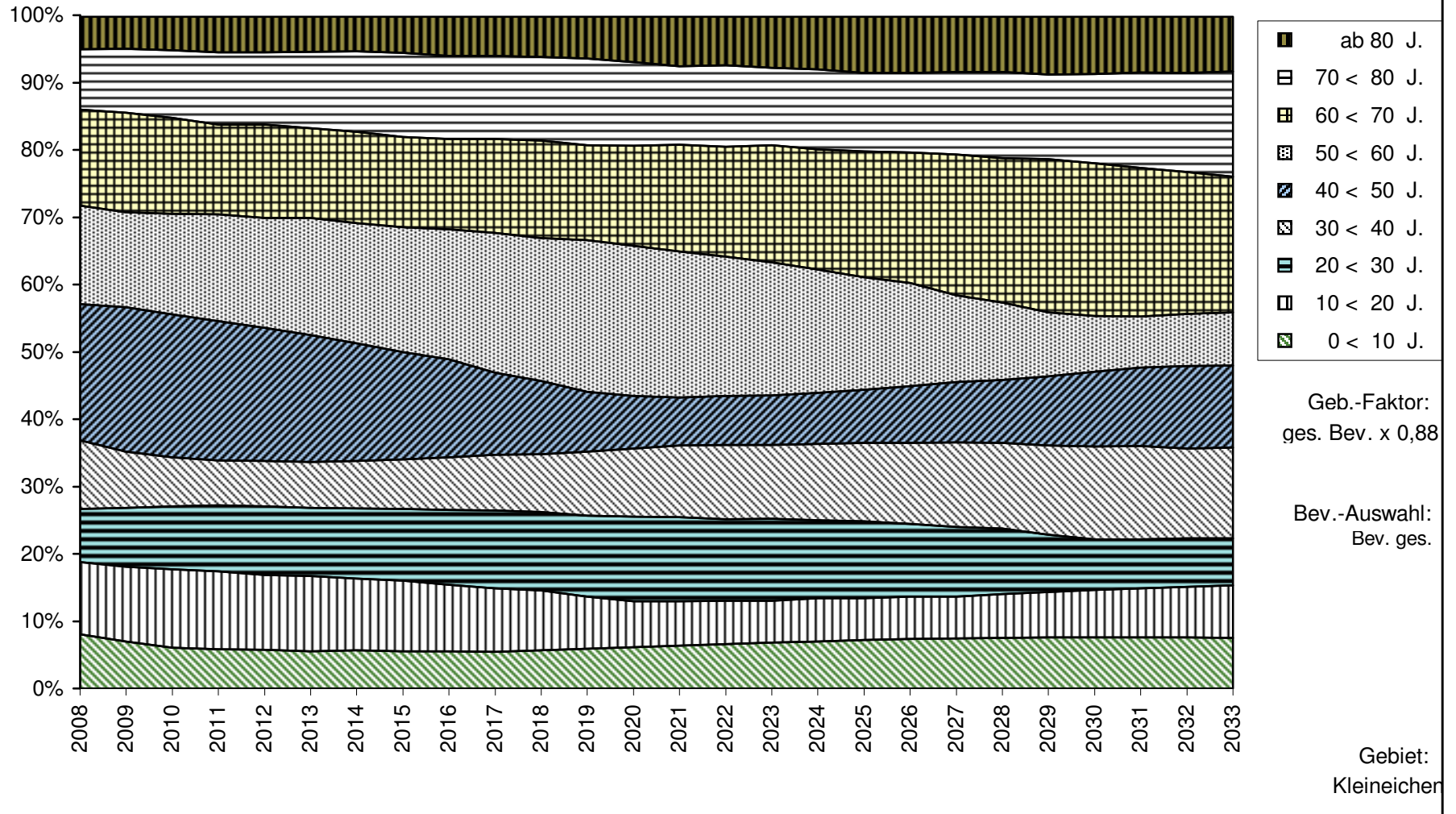
Geb.-Faktor:
ges. Bev. x 0,88

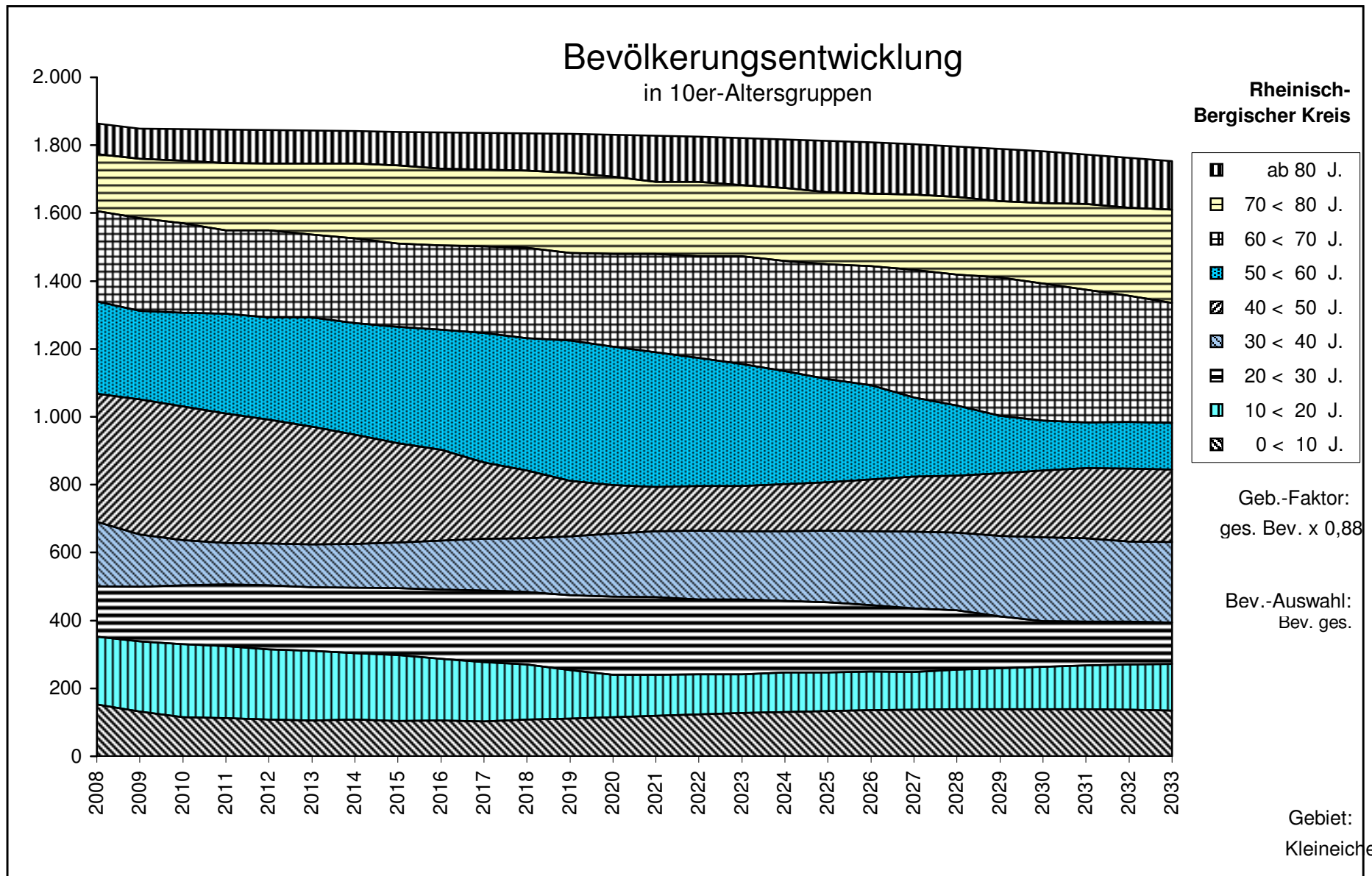
Bev.-Auswahl:
Bev. ges.

Gebiet:
Kleineichen

Anteile von 10er-Altersgruppen an der Gesamtbevölkerung

Rheinisch-Bergischer Kreis



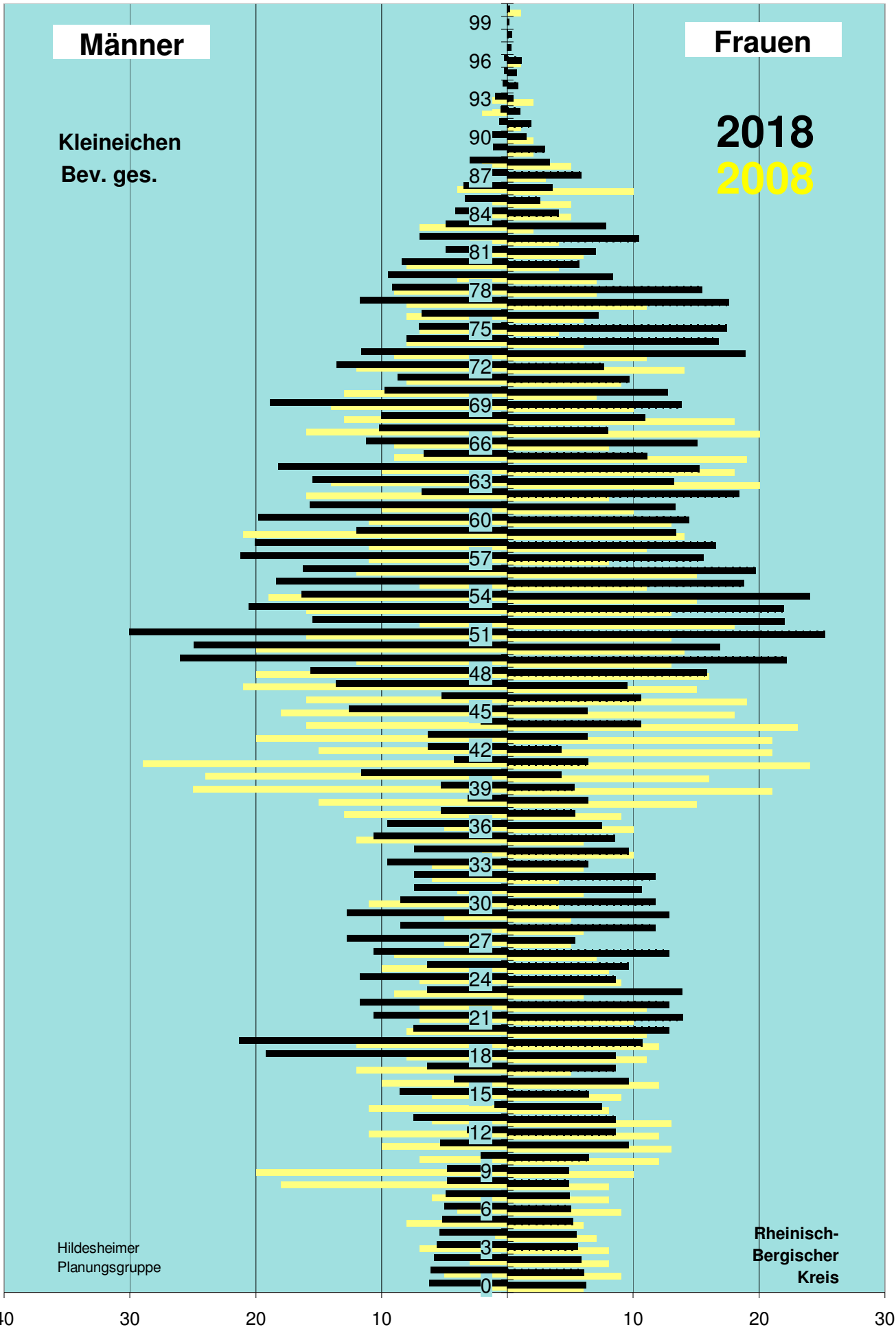


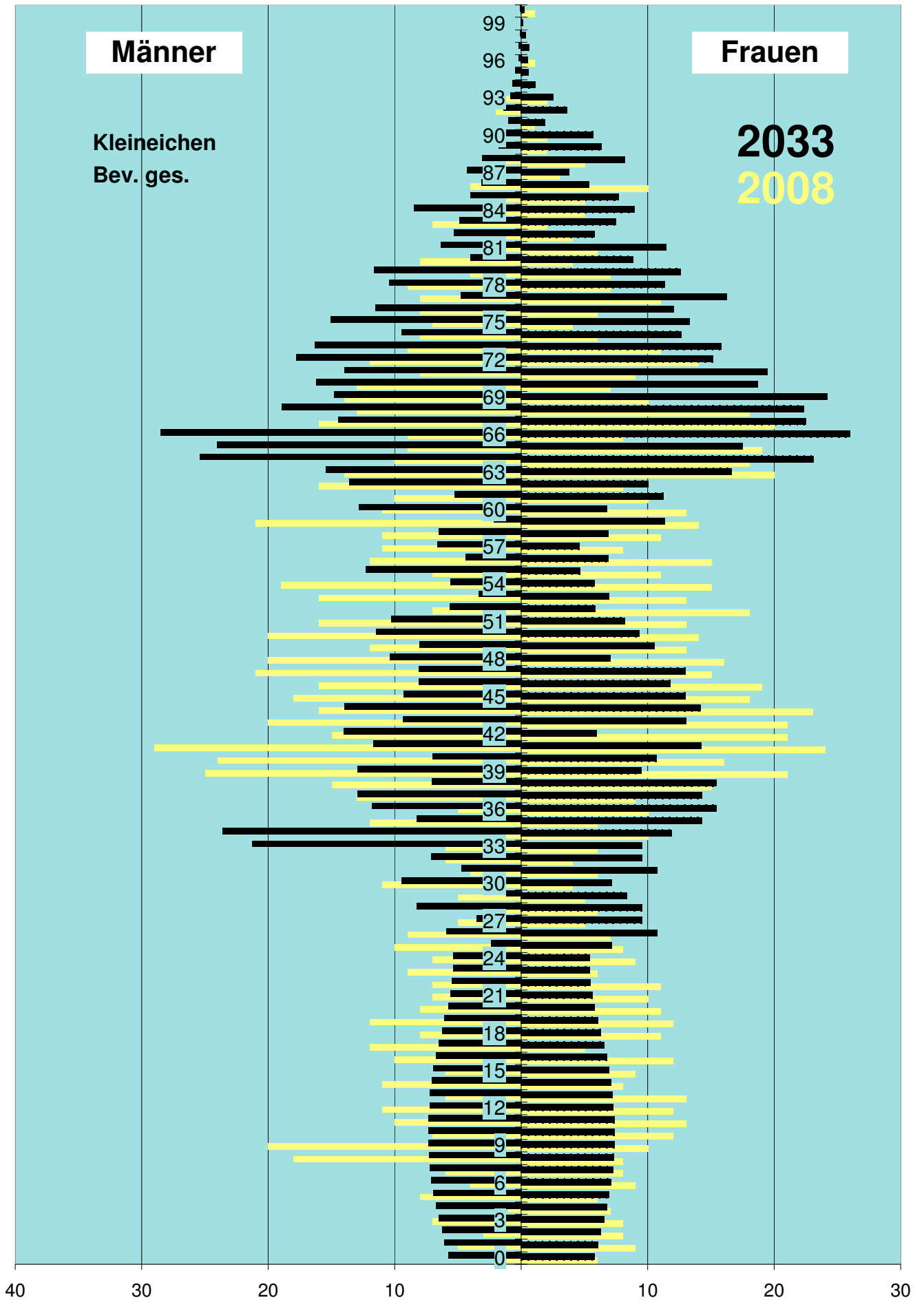
| A u s g a n g s d a t e n | | | | | | |
|---------------------------|----------|-------|-------|-------|-------|-------|
| Alter | Basis-J. | 2008 | | 2018 | | 2033 |
| | weibl | männl | weibl | männl | weibl | männl |
| 0 | 6 | 2 | 6 | 6 | 6 | 6 |
| 1 | 9 | 5 | 6 | 6 | 6 | 6 |
| 2 | 8 | 3 | 6 | 6 | 6 | 6 |
| 3 | 8 | 7 | 6 | 6 | 7 | 7 |
| 4 | 7 | 1 | 5 | 5 | 7 | 7 |
| 5 | 6 | 8 | 5 | 5 | 7 | 7 |
| 6 | 9 | 4 | 5 | 5 | 7 | 7 |
| 7 | 8 | 6 | 5 | 5 | 7 | 7 |
| 8 | 8 | 18 | 5 | 5 | 7 | 7 |
| 9 | 10 | 20 | 5 | 5 | 7 | 7 |
| 10 | 12 | 7 | 6 | 2 | 7 | 7 |
| 11 | 13 | 10 | 10 | 5 | 7 | 7 |
| 12 | 12 | 11 | 9 | 3 | 7 | 7 |
| 13 | 13 | 6 | 9 | 7 | 7 | 7 |
| 14 | 8 | 11 | 7 | 1 | 7 | 7 |
| 15 | 9 | 6 | 6 | 9 | 7 | 7 |
| 16 | 12 | 10 | 10 | 4 | 7 | 7 |
| 17 | 5 | 12 | 9 | 6 | 7 | 7 |
| 18 | 11 | 8 | 9 | 19 | 6 | 6 |
| 19 | 12 | 12 | 11 | 21 | 6 | 6 |
| 20 | 11 | 8 | 13 | 7 | 6 | 6 |
| 21 | 10 | 7 | 14 | 11 | 6 | 6 |
| 22 | 11 | 7 | 13 | 12 | 5 | 5 |
| 23 | 6 | 9 | 14 | 6 | 5 | 5 |
| 24 | 9 | 7 | 9 | 12 | 5 | 5 |
| 25 | 8 | 10 | 10 | 6 | 7 | 2 |
| 26 | 7 | 9 | 13 | 11 | 11 | 6 |
| 27 | 5 | 5 | 5 | 13 | 10 | 4 |
| 28 | 6 | 3 | 12 | 9 | 10 | 8 |
| 29 | 5 | 5 | 13 | 13 | 8 | 1 |
| 30 | 4 | 11 | 12 | 8 | 7 | 9 |
| 31 | 6 | 4 | 11 | 7 | 11 | 5 |
| 32 | 4 | 6 | 12 | 7 | 10 | 7 |
| 33 | 6 | 6 | 6 | 10 | 10 | 21 |
| 34 | 10 | 2 | 10 | 7 | 12 | 24 |
| 35 | 6 | 12 | 9 | 11 | 14 | 8 |
| 36 | 10 | 5 | 7 | 10 | 15 | 12 |
| 37 | 9 | 13 | 5 | 5 | 14 | 13 |
| 38 | 15 | 15 | 6 | 3 | 15 | 7 |
| 39 | 21 | 25 | 5 | 5 | 9 | 13 |
| 40 | 16 | 24 | 4 | 12 | 11 | 7 |
| 41 | 24 | 29 | 6 | 4 | 14 | 12 |
| 42 | 21 | 15 | 4 | 6 | 6 | 14 |
| 43 | 21 | 20 | 6 | 6 | 13 | 9 |
| 44 | 23 | 16 | 11 | 2 | 14 | 14 |
| 45 | 18 | 18 | 6 | 13 | 13 | 9 |
| 46 | 19 | 16 | 11 | 5 | 12 | 8 |
| 47 | 15 | 21 | 10 | 14 | 13 | 8 |
| 48 | 16 | 20 | 16 | 16 | 7 | 10 |
| 49 | 13 | 12 | 22 | 26 | 11 | 8 |
| 50 | 14 | 20 | 17 | 25 | 9 | 11 |

| A u s g a n g s d a t e n | | | | | | | |
|---------------------------|----------|-------|------------|-------|------------|-------|------|
| Alter | Basis-J. | | 2008 B +10 | | 2018 B +25 | | 2033 |
| | weibl | männl | weibl | männl | weibl | männl | |
| 51 | 13 | 16 | 25 | 30 | 8 | 10 | |
| 52 | 18 | 7 | 22 | 15 | 6 | 6 | |
| 53 | 13 | 16 | 22 | 21 | 7 | 3 | |
| 54 | 15 | 19 | 24 | 16 | 6 | 6 | |
| 55 | 11 | 7 | 19 | 18 | 5 | 12 | |
| 56 | 15 | 12 | 20 | 16 | 7 | 4 | |
| 57 | 8 | 11 | 16 | 21 | 5 | 7 | |
| 58 | 11 | 11 | 17 | 20 | 7 | 7 | |
| 59 | 14 | 21 | 13 | 12 | 11 | 2 | |
| 60 | 13 | 11 | 14 | 20 | 7 | 13 | |
| 61 | 10 | 10 | 13 | 16 | 11 | 5 | |
| 62 | 8 | 16 | 18 | 7 | 10 | 14 | |
| 63 | 20 | 14 | 13 | 15 | 17 | 15 | |
| 64 | 18 | 10 | 15 | 18 | 23 | 25 | |
| 65 | 19 | 9 | 11 | 7 | 17 | 24 | |
| 66 | 8 | 9 | 15 | 11 | 26 | 29 | |
| 67 | 20 | 16 | 8 | 10 | 23 | 14 | |
| 68 | 18 | 13 | 11 | 10 | 22 | 19 | |
| 69 | 10 | 14 | 14 | 19 | 24 | 15 | |
| 70 | 7 | 13 | 13 | 10 | 19 | 16 | |
| 71 | 9 | 8 | 10 | 9 | 19 | 14 | |
| 72 | 14 | 12 | 8 | 14 | 15 | 18 | |
| 73 | 11 | 9 | 19 | 12 | 16 | 16 | |
| 74 | 6 | 8 | 17 | 8 | 13 | 9 | |
| 75 | 4 | 7 | 17 | 7 | 13 | 15 | |
| 76 | 6 | 8 | 7 | 7 | 12 | 12 | |
| 77 | 11 | 8 | 18 | 12 | 16 | 5 | |
| 78 | 7 | 9 | 15 | 9 | 11 | 10 | |
| 79 | 7 | 4 | 8 | 9 | 13 | 12 | |
| 80 | 4 | 8 | 6 | 8 | 9 | 4 | |
| 81 | 6 | 3 | 7 | 5 | 11 | 6 | |
| 82 | 4 | 3 | 10 | 7 | 6 | 5 | |
| 83 | 2 | 7 | 8 | 5 | 7 | 5 | |
| 84 | 5 | 3 | 4 | 4 | 9 | 8 | |
| 85 | 5 | 3 | 3 | 3 | 8 | 4 | |
| 86 | 10 | 4 | 4 | 3 | 5 | 3 | |
| 87 | 3 | 0 | 6 | 3 | 4 | 4 | |
| 88 | 5 | 2 | 3 | 3 | 8 | 3 | |
| 89 | 2 | 0 | 3 | 1 | 6 | 2 | |
| 90 | 2 | 0 | 2 | 2 | 6 | 1 | |
| 91 | 1 | 0 | 2 | 1 | 2 | 1 | |
| 92 | 0 | 2 | 1 | 1 | 4 | 1 | |
| 93 | 2 | 2 | 0 | 1 | 3 | 1 | |
| 94 | 0 | 0 | 1 | 0 | 1 | 1 | |
| 95 | 0 | 0 | 1 | 0 | 1 | 0 | |
| 96 | 1 | 0 | 1 | 0 | 1 | 0 | |
| 97 | 0 | 0 | 0 | 0 | 1 | 0 | |
| 98 | 0 | 0 | 0 | 0 | 0 | 0 | |
| 99 | 0 | 0 | 0 | 0 | 0 | 0 | |
| > 99 | 1 | 0 | 0 | 0 | 0 | 0 | |

| Tabellendaten | | | | | | |
|---------------|----------|------|---------------|------|-------|------|
| Lebensbaum 10 | | | | | | |
| Lebensbaum 25 | | | Lebensbaum 25 | | | |
| | Basis-J. | 2008 | B +10 | 2018 | B +25 | 2033 |
| 0 | 6 | -2 | 6 | -6 | 6 | -6 |
| 1 | 9 | -5 | 6 | -6 | 6 | -6 |
| 2 | 8 | -3 | 6 | -6 | 6 | -6 |
| 3 | 8 | -7 | 6 | -6 | 7 | -7 |
| 4 | 7 | -1 | 5 | -5 | 7 | -7 |
| 5 | 6 | -8 | 5 | -5 | 7 | -7 |
| 6 | 9 | -4 | 5 | -5 | 7 | -7 |
| 7 | 8 | -6 | 5 | -5 | 7 | -7 |
| 8 | 8 | -18 | 5 | -5 | 7 | -7 |
| 9 | 10 | -20 | 5 | -5 | 7 | -7 |
| 10 | 12 | -7 | 6 | -2 | 7 | -7 |
| 11 | 13 | -10 | 10 | -5 | 7 | -7 |
| 12 | 12 | -11 | 9 | -3 | 7 | -7 |
| 13 | 13 | -6 | 9 | -7 | 7 | -7 |
| 14 | 8 | -11 | 7 | -1 | 7 | -7 |
| 15 | 9 | -6 | 6 | -9 | 7 | -7 |
| 16 | 12 | -10 | 10 | -4 | 7 | -7 |
| 17 | 5 | -12 | 9 | -6 | 7 | -7 |
| 18 | 11 | -8 | 9 | -19 | 6 | -6 |
| 19 | 12 | -12 | 11 | -21 | 6 | -6 |
| 20 | 11 | -8 | 13 | -7 | 6 | -6 |
| 21 | 10 | -7 | 14 | -11 | 6 | -6 |
| 22 | 11 | -7 | 13 | -12 | 5 | -5 |
| 23 | 6 | -9 | 14 | -6 | 5 | -5 |
| 24 | 9 | -7 | 9 | -12 | 5 | -5 |
| 25 | 8 | -10 | 10 | -6 | 7 | -2 |
| 26 | 7 | -9 | 13 | -11 | 11 | -6 |
| 27 | 5 | -5 | 5 | -13 | 10 | -4 |
| 28 | 6 | -3 | 12 | -9 | 10 | -8 |
| 29 | 5 | -5 | 13 | -13 | 8 | -1 |
| 30 | 4 | -11 | 12 | -8 | 7 | -9 |
| 31 | 6 | -4 | 11 | -7 | 11 | -5 |
| 32 | 4 | -6 | 12 | -7 | 10 | -7 |
| 33 | 6 | -6 | 6 | -10 | 10 | -21 |
| 34 | 10 | -2 | 10 | -7 | 12 | -24 |
| 35 | 6 | -12 | 9 | -11 | 14 | -8 |
| 36 | 10 | -5 | 7 | -10 | 15 | -12 |
| 37 | 9 | -13 | 5 | -5 | 14 | -13 |
| 38 | 15 | -15 | 6 | -3 | 15 | -7 |
| 39 | 21 | -25 | 5 | -5 | 9 | -13 |
| 40 | 16 | -24 | 4 | -12 | 11 | -7 |
| 41 | 24 | -29 | 6 | -4 | 14 | -12 |
| 42 | 21 | -15 | 4 | -6 | 6 | -14 |
| 43 | 21 | -20 | 6 | -6 | 13 | -9 |
| 44 | 23 | -16 | 11 | -2 | 14 | -14 |
| 45 | 18 | -18 | 6 | -13 | 13 | -9 |
| 46 | 19 | -16 | 11 | -5 | 12 | -8 |
| 47 | 15 | -21 | 10 | -14 | 13 | -8 |
| 48 | 16 | -20 | 16 | -16 | 7 | -10 |
| 49 | 13 | -12 | 22 | -26 | 11 | -8 |
| 50 | 14 | -20 | 17 | -25 | 9 | -11 |

| Tabellendaten | | | | | | |
|---------------|----------|------|---------------|------|-------|------|
| Lebensbaum 10 | | | | | | |
| Lebensbaum 25 | | | Lebensbaum 25 | | | |
| | Basis-J. | 2008 | B +10 | 2018 | B +25 | 2033 |
| 51 | 13 | -16 | 25 | -30 | 8 | -10 |
| 52 | 18 | -7 | 22 | -15 | 6 | -6 |
| 53 | 13 | -16 | 22 | -21 | 7 | -3 |
| 54 | 15 | -19 | 24 | -16 | 6 | -6 |
| 55 | 11 | -7 | 19 | -18 | 5 | -12 |
| 56 | 15 | -12 | 20 | -16 | 7 | -4 |
| 57 | 8 | -11 | 16 | -21 | 5 | -7 |
| 58 | 11 | -11 | 17 | -20 | 7 | -7 |
| 59 | 14 | -21 | 13 | -12 | 11 | -2 |
| 60 | 13 | -11 | 14 | -20 | 7 | -13 |
| 61 | 10 | -10 | 13 | -16 | 11 | -5 |
| 62 | 8 | -16 | 18 | -7 | 10 | -14 |
| 63 | 20 | -14 | 13 | -15 | 17 | -15 |
| 64 | 18 | -10 | 15 | -18 | 23 | -25 |
| 65 | 19 | -9 | 11 | -7 | 17 | -24 |
| 66 | 8 | -9 | 15 | -11 | 26 | -29 |
| 67 | 20 | -16 | 8 | -10 | 23 | -14 |
| 68 | 18 | -13 | 11 | -10 | 22 | -19 |
| 69 | 10 | -14 | 14 | -19 | 24 | -15 |
| 70 | 7 | -13 | 13 | -10 | 19 | -16 |
| 71 | 9 | -8 | 10 | -9 | 19 | -14 |
| 72 | 14 | -12 | 8 | -14 | 15 | -18 |
| 73 | 11 | -9 | 19 | -12 | 16 | -16 |
| 74 | 6 | -8 | 17 | -8 | 13 | -9 |
| 75 | 4 | -7 | 17 | -7 | 13 | -15 |
| 76 | 6 | -8 | 7 | -7 | 12 | -12 |
| 77 | 11 | -8 | 18 | -12 | 16 | -5 |
| 78 | 7 | -9 | 15 | -9 | 11 | -10 |
| 79 | 7 | -4 | 8 | -9 | 13 | -12 |
| 80 | 4 | -8 | 6 | -8 | 9 | -4 |
| 81 | 6 | -3 | 7 | -5 | 11 | -6 |
| 82 | 4 | -3 | 10 | -7 | 6 | -5 |
| 83 | 2 | -7 | 8 | -5 | 7 | -5 |
| 84 | 5 | -3 | 4 | -4 | 9 | -8 |
| 85 | 5 | -3 | 3 | -3 | 8 | -4 |
| 86 | 10 | -4 | 4 | -3 | 5 | -3 |
| 87 | 3 | 0 | 6 | -3 | 4 | -4 |
| 88 | 5 | -2 | 3 | -3 | 8 | -3 |
| 89 | 2 | 0 | 3 | -1 | 6 | -2 |
| 90 | 2 | 0 | 2 | -2 | 6 | -1 |
| 91 | 1 | 0 | 2 | -1 | 2 | -1 |
| 92 | 0 | -2 | 1 | -1 | 4 | -1 |
| 93 | 2 | -2 | 0 | -1 | 3 | -1 |
| 94 | 0 | 0 | 1 | 0 | 1 | -1 |
| 95 | 0 | 0 | 1 | 0 | 1 | 0 |
| 96 | 1 | 0 | 1 | 0 | 1 | 0 |
| 97 | 0 | 0 | 0 | 0 | 1 | 0 |
| 98 | 0 | 0 | 0 | 0 | 0 | 0 |
| 99 | 0 | 0 | 0 | 0 | 0 | 0 |
| > 99 | 1 | 0 | 0 | 0 | 0 | 0 |





Entwicklung der Einwohnerzahlen und Einwohnerdichte
im Rheinisch-Bergischen Kreis

Abt. 67 / Statistik
Herr Prediger 2510

| Gebiete | Nr. | Fläche in qkm | Einwohner am 1.1.2008 | | Einwohner am 1.1.2033 | | Veränderung (Sp.6 / Sp.4) |
|-------------------------------|-------|------------------|-----------------------|--------------|-----------------------|--------------|------------------------------|
| | | | Anzahl | Einw / qkm | Anzahl | Einw / qkm | |
| Sp. 1 | Sp. 2 | Sp. 3 | Sp. 4 | Sp. 5 | Sp. 6 | Sp. 7 | Sp. 8 |
| Stadt Berg. Gladbach | | 83,12 | 110.390 | 1.328 | 108.574 | 1.306 | 98,4% |
| Paffrath | 1 | 11,39 | 27.757 | 2.437 | 27.702 | 2.432 | 99,8% |
| Gladbach | 2 | 13,58 | 29.656 | 2.184 | 29.595 | 2.179 | 99,8% |
| Sand | 3 | 13,09 | 4.094 | 313 | 4.085 | 312 | 99,8% |
| Herkenrath | 4 | 15,21 | 6.031 | 397 | 6.199 | 408 | 102,8% |
| Bensberg | 5 | 17,84 | 19.945 | 1.118 | 19.691 | 1.104 | 98,7% |
| Refrath | 6 | 12,01 | 22.907 | 1.907 | 21.302 | 1.774 | 93,0% |
| Stadt Burscheid * | | 27,38 | 19.604 | 716 | 20.482 | 748 | 104,5% |
| Stadtteil 1 | 7 | 19,91 | 12.729 | 639 | 13.113 | 659 | 103,0% |
| Stadtteil 2 | 8 | 7,47 | 6.871 | 920 | 7.374 | 987 | 107,3% |
| Gemeinde Kürten * | | 67,55 | 20.594 | 305 | 21.856 | 324 | 106,1% |
| Kürten | 9 | 19,79 | 5.748 | 290 | 6.207 | 314 | 108,0% |
| Olpe | 10 | 11,29 | 1.919 | 170 | 2.234 | 198 | 116,4% |
| Biesfeld | 11 | 15,59 | 5.528 | 355 | 5.524 | 354 | 99,9% |
| Dürscheid | 12 | 4,89 | 3.065 | 627 | 3.197 | 654 | 104,3% |
| Bechen | 13 | 15,99 | 4.332 | 271 | 4.702 | 294 | 108,5% |
| Stadt Leichlingen * | | 37,33 | 29.094 | 779 | 28.331 | 759 | 97,4% |
| Westl. d. Wupper | 14 | 6,39 | 10.829 | 1.695 | 10.908 | 1.707 | 100,7% |
| Östl. d. Wupper | 15 | 3,98 | 7.879 | 1.980 | 7.474 | 1.878 | 94,9% |
| Außenortschaften | 16 | 15,24 | 4.541 | 298 | 4.029 | 264 | 88,7% |
| Witzhelden | 17 | 11,72 | 5.643 | 481 | 5.718 | 488 | 101,3% |
| Gemeinde Odenthal * | | 39,97 | 16.373 | 410 | 16.585 | 415 | 101,3% |
| Odenthal | 18 | 7,29 | 4.663 | 640 | 4.383 | 601 | 94,0% |
| Altenberg, Blecher | 19 | 4,86 | 3.627 | 746 | 3.642 | 749 | 100,4% |
| Neschen, Scheuren | 20 | 14,28 | 1.983 | 139 | 2.090 | 146 | 105,4% |
| Eikamp, Höffe | 21 | 9,59 | 2.411 | 251 | 2.741 | 286 | 113,7% |
| Voiswinkel | 22 | 3,95 | 3.689 | 934 | 3.729 | 944 | 101,1% |
| Stadt Overath * | | 68,84 | 28.438 | 413 | 29.032 | 422 | 102,1% |
| Overath | 23 | 21,26 | 7.939 | 373 | 7.651 | 360 | 96,4% |
| Heiligenhaus | 24 | 3,75 | 3.523 | 939 | 3.696 | 986 | 104,9% |
| Marialinden | 25 | 18,72 | 4.178 | 223 | 4.301 | 230 | 102,9% |
| Steinenbrück | 26 | 6,57 | 5.355 | 815 | 5.514 | 839 | 103,0% |
| Vilkerath | 27 | 8,93 | 3.099 | 347 | 3.442 | 385 | 111,1% |
| Immekeppel | 28 | 5,19 | 2.026 | 390 | 2.068 | 398 | 102,1% |
| Untereschbach | 29 | 2,20 | 1.385 | 630 | 1.465 | 666 | 105,8% |
| Brombach | 30 | 2,22 | 931 | 419 | 887 | 400 | 95,3% |
| Stadt Rösrath * | | 38,82 | 29.284 | 754 | 29.755 | 766 | 101,6% |
| Rösrath | 31 | 15,43 | 13.199 | 855 | 14.004 | 908 | 106,1% |
| Hoffnungstal | 32 | 2,95 | 7.754 | 2.628 | 7.744 | 2.625 | 99,9% |
| Forsbach | 33 | 7,50 | 6.467 | 862 | 6.244 | 833 | 96,6% |
| Kleineichen | 34 | 12,94 | 1.864 | 144 | 1.754 | 136 | 94,1% |
| Stadt Wermelskirchen * | | 74,66 | 37.571 | 503 | 37.316 | 500 | 99,3% |
| Innenstadt | 35 | 4,86 | 15.161 | 3.120 | 14.133 | 2.908 | 93,2% |
| Wüstenhof | 36 | 3,74 | 1.864 | 498 | 1.776 | 475 | 95,3% |
| Eipringhausen | 37 | 8,07 | 1.902 | 236 | 2.017 | 250 | 106,0% |
| Tente | 38 | 11,83 | 6.342 | 536 | 6.896 | 583 | 108,7% |
| Hünger | 39 | 5,99 | 2.921 | 488 | 2.872 | 479 | 98,3% |
| Dabringhausen | 40 | 8,34 | 4.777 | 573 | 4.876 | 585 | 102,1% |
| Dabringhausen Süd | 41 | 14,63 | 1.008 | 69 | 1.045 | 71 | 103,6% |
| Dhünn | 42 | 17,20 | 3.469 | 202 | 3.536 | 206 | 101,9% |
| Rh.-Bergischer Kreis | | 437,67 | 291.348 | 666 | 291.930 | 667 | 100,2% |

* Die Einwohnerzahl der Stadt/Gemeinde ist größer als die Summe der Einwohnerzahlen der Stadtteile/Gemeindeteile, weil die Stadt/Gemeinde nicht alle Einwohner einem Stadtteil/Gemeindeteil zugeordnet hat.